



## Killer B Motorsport Dual Washer/Coolant Reservoir

This part works on all U.S. STI models, 2004-2020

This installation took place on a 2019 STI (VA chassis)

**TOOLS USED:** Hobby knife, 10mm socket/socket wrench, 12mm wrench, 2 standard screwdrivers, hose cutters, side cutting pliers.

**WHAT'S INCLUDED:** KBM Reservoir, hanger bracket, 5/8"x13" hose, 5/8"x1/4" hose, 1 "H" hose set for use with hatchbacks/wagons, 1 ziptie, 1 M8 bolt, 5/8"x5/8" barbed elbow.

1. Installation of the Killer B Motorsport Dual washer/coolant reservoir begins by opening the hood.
2. Locate the factory coolant overflow reservoir: pull the rubber coolant overflow hose out of the reservoir but leave it attached to the radiator.
3. Gently squeeze the driver's radiator shroud in the area indicated by red arrows. After you disengage the tab, rotate the reservoir the reservoir counterclockwise slightly and slide the reservoir toward the driver's fender, and back. Lift the reservoir up to remove it from the vehicle.



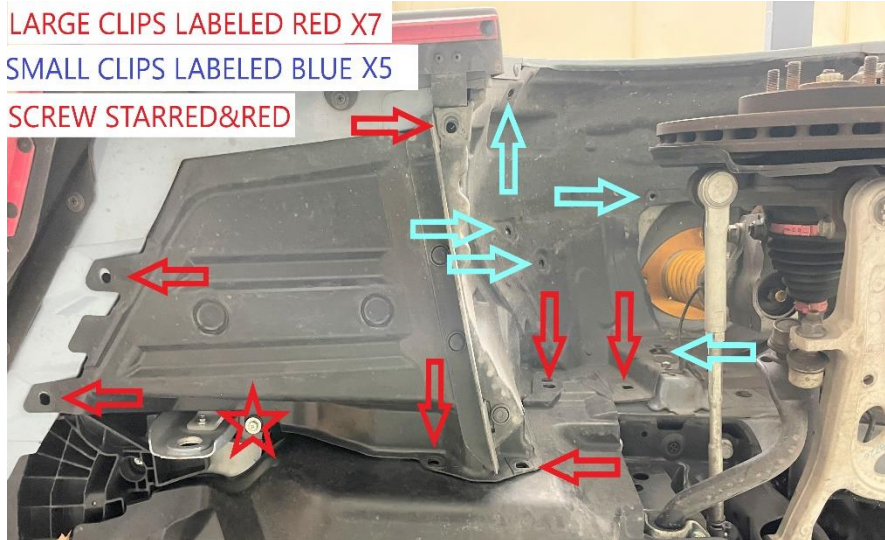
4. With the factory reservoir removed you will need to use a new hobby knife to trim the driver's side radiator fan shroud. (Remove a minimum of 1/8" of material from the areas marked in red)



5. Use a screwdriver to loosen the clip from the filler neck of the washer fluid reservoir.



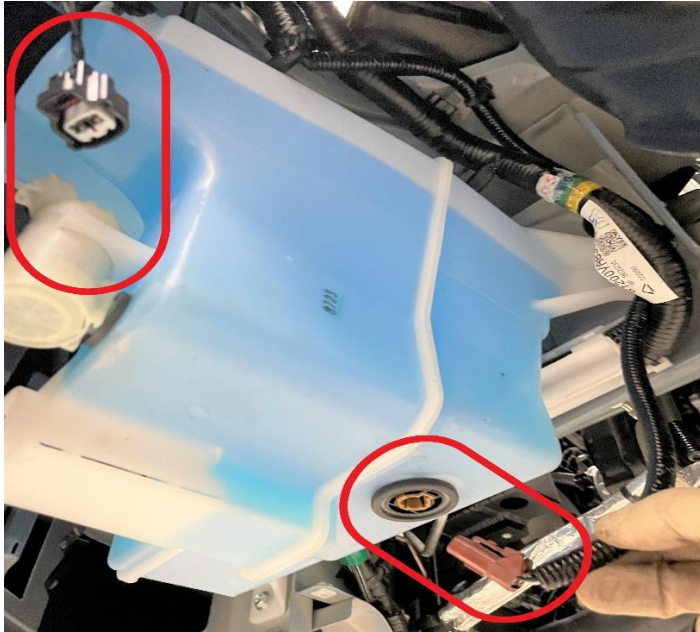
6. Raise the left or front of the vehicle enough to remove the driver's front wheel, remove said wheel. If you do not have access to a vehicle lift, USE JACK STANDS.
7. Remove all clips AND the M6 bolt from the front half of the driver's front fender liner.



8. Use a bungee cord to pull the liner back toward the wheel hub, exposing the reservoir.



9. Unplug the washer fluid pump and low fluid warning float.



10. Use a bucket to catch any washer fluid if you want to reuse it. (use a coffee filter to filter out contaminants)

Leave the washer fluid hose attached to the pump and remove the pump from the factory reservoir.

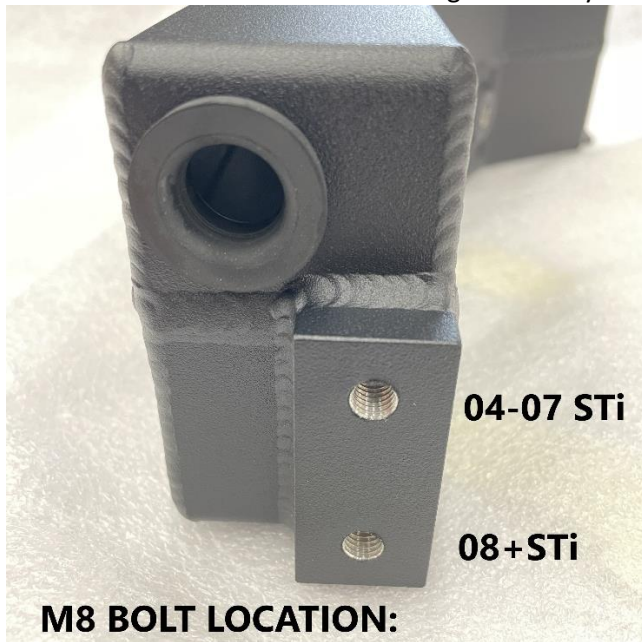


(You do not need to remove your pump from the vehicle)

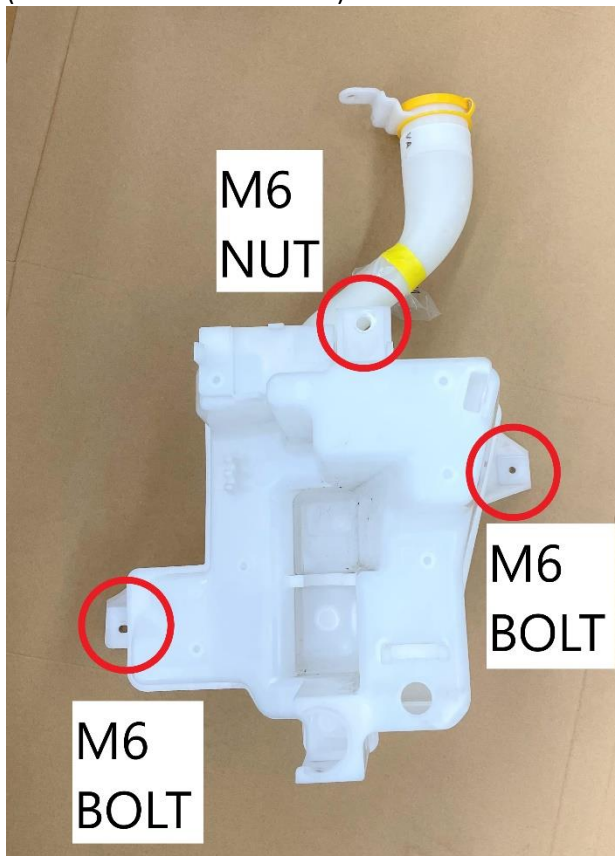
11. Remove the grommet from the pump and install it in the hole on the bottom of the Killer B Dual Wash reservoir.

12. Install the supplied M8 bolt in the appropriate threaded hold in the bottom of the reservoir.

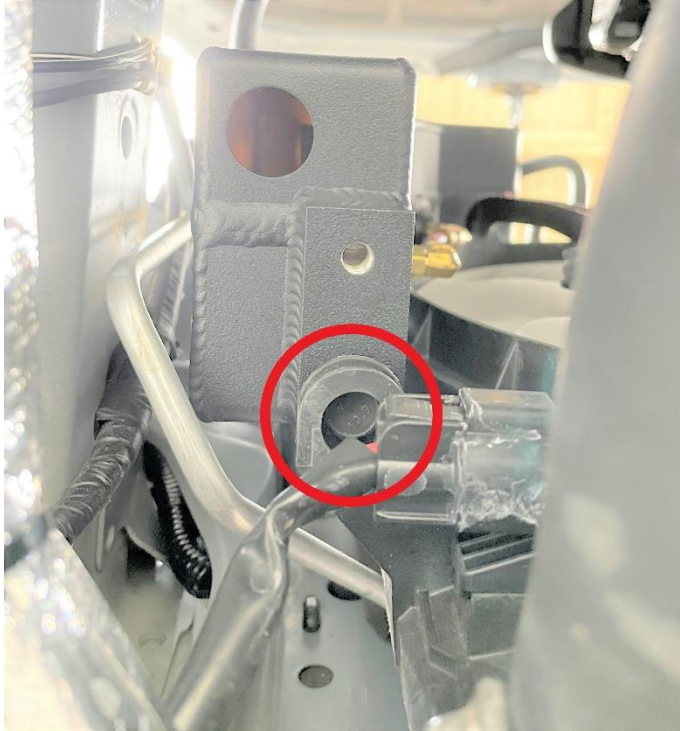
NOTE The bolt does not need to be tightened beyond 36 IN-LBS (3 LB-FT)



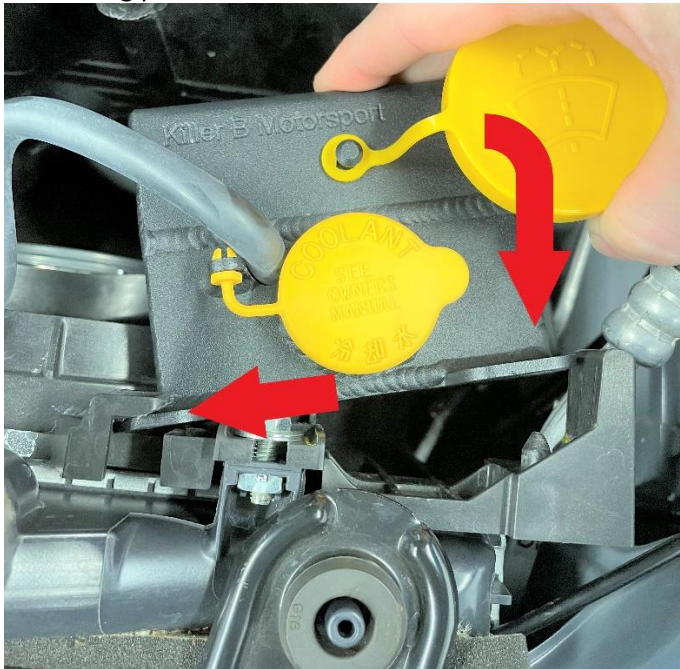
13. Use a 10mm socket and socket wrench to loosen each of the 3 fasteners.  
(There are 2 bolts and 1 nut)



14. Remove the factory washer fluid reservoir.
15. To install the reservoir, start by placing the head of the installed M8 bolt into the locating hole in the driver's radiator fan shroud.



16. Next, slide the reservoir inward so that its inner tab slides into the gate at the top of the fan shroud. Rotate the reservoir clockwise so that the locking tab engages, locking the reservoir into its final resting place.



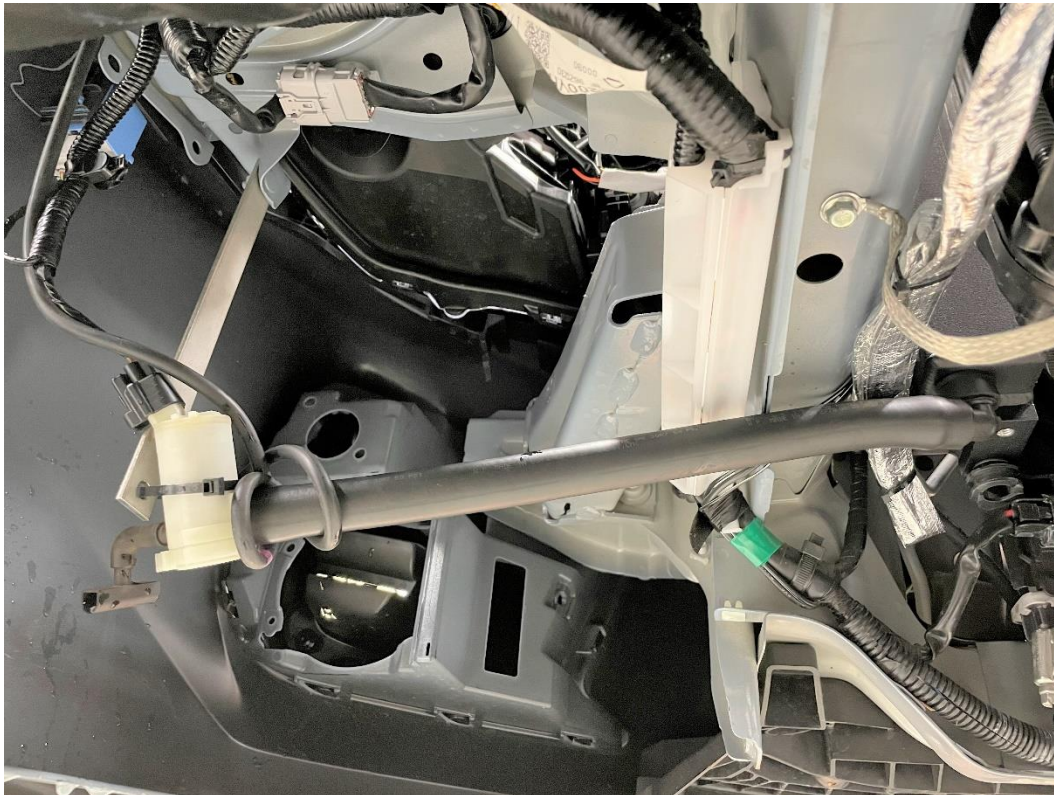
**NOTE** If you can see that the radiator shroud is curved after installing the reservoir, remove the reservoir and trim more from the shroud so that the shroud is not stressed from having the reservoir installed.

17. Reinstall the rubber coolant overflow hose from step two.
18. Take the supplied 5/8" x 13" long hose and install one end on the supplied elbow.
19. Install the supplied 5/8" x 1/4" long hose and install it on the other end of the elbow.
20. Dip the barb of the elbow in washer fluid to make hose installation easier.
21. Install the end with the 1/4" hose segment into the bottom of the Killer B Motorsport Dual Washer/Coolant Reservoir.

The goal is to have just enough of the barb inserted to create a positive seal with the grommet without falling out or leaking.



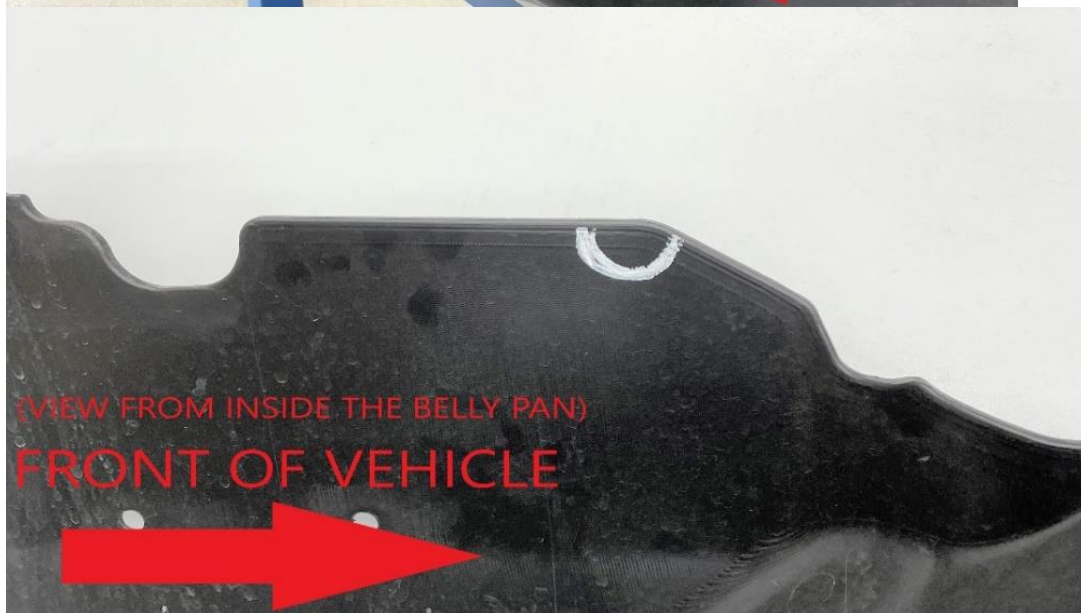
22. Install the open end of the 5/8" ID barbed elbow and install it on the pump.
23. Reconnect the pump to power.
24. Take the supplied hanger bracket and install one end on the threaded stud where the factory M6 nut was removed. Before you tighten it, ziptie the pump to the bottom end of the bracket. Wrap the washer fluid hose around something loosely or ziptie it so that movement and vibrations are kept to a minimum.



25. Pour a couple of ounces of water in the WASHER side of the Killer B reservoir and check for leaks. Make sure that grommet did not deform when you inserted the elbow.
26. Once you have determined that there are no fluid leaks and all hardware has been mounted, connected and secured, fill the rest of the reservoir with washer fluid and test the system for proper operation.
27. Remove the bungee cord from the fender liner and guide it back to its original location.
28. Reinstall all related clips and the remaining screw in the fender liner.
29. Reinstall driver's wheel, torque to factory or wheel spec.
30. Remove belly pan to mark for trimming. (3 bolts, 6 push clips, 2 plastic C clips)  
\*\*\*THIS STEP MAY NOT BE NECESSARY ON EARLIER MODELS.



31. Mark your belly pan for trimming, to allow clearance for the 5/8" ID hose.



32. Reinstall belly pan: install 2 plastic C clips, 6 push clips and 3bolts.





33. Check for obstructions and then lower the vehicle to the ground.
34. Double check you have reinstalled the coolant overflow hose, filled each side of the reservoir and have no leaks. OEM caps are used, fill each side appropriately.
35. Make sure you have reconnected the washer fluid pump connector.



LET'S SEE YOUR RESERVOIR INSTALLED-  
TAG US ON FACEBOOK OR INSTAGRAM [@KillerBMotorsport](#)